



NASHUK
LIMITED PARTNERSHIP

APRIL 2025

**Quarterly
Report**

A message from

NASHUK LP

Nashuk LP is a jointly owned partnership between Tseshaht First Nation and ROGA Group, created to drive sustainable community development through responsible infrastructure and forestry work. With equal ownership and decision-making power, Nashuk operates as a Nation-led vehicle for equity, employment, and long-term economic independence.

Our model ensures 50% of all income is returned directly to Tseshaht, reinforcing the principle that prosperity generated on the land should benefit the community first. Since launching in early 2025, Nashuk has generated nearly \$1 million in revenue, initiated key civil and forestry projects, and begun building Nation-owned assets that will grow equity for years to come.

This first quarterly report highlights project milestones, strategic investments, and the momentum of a five-year collaboration built on transparency, trust, and a shared commitment to capacity building within Tseshaht territory.

5 YEARS

of ROGA and Tseshaht First
Nation working together

\$500K

direct payment to
Tseshaht to date

50%

of profits returned
to Tseshaht

140,000m³

planned logging
(2025 target)

Project Highlights

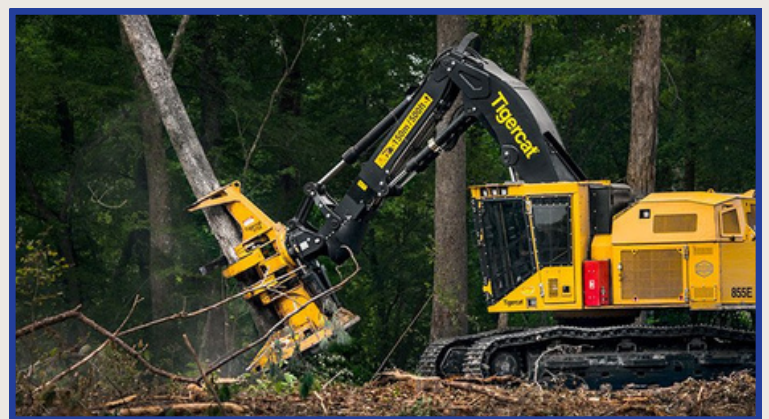
CELEBRATING OUR SUCCESS

ROAD BUILDING & MAINTENANCE

In the past year, Nashuk LP delivered \$1.5 million in road construction and deactivation projects across Tseshaht territory. These works supported safe access to forestry sites, protected environmental features, and opened pathways for future development. Although operations temporarily paused to prioritize the Canal Main Project, plans are underway to resume strategic maintenance and infrastructure upgrades in 2025. Each phase of work contributes to safer access routes, supports stewardship, and enhances capacity for long-term land use planning.

FORESTRY

Nashuk LP has been contracted to complete 70,000 cubic meters of harvesting under the Cisaa forestry license, matched by an additional 70,000 cubic meters from Mosaic Forest Management. This shared effort reflects a strong commitment to sustainable forest stewardship and responsible economic development within Tseshaht territory. As we move forward, Nashuk LP is on track to meet a 2025 target of 140,000 cubic meters, providing stable revenue and employment while upholding environmental and cultural values.



Project Highlights

CELEBRATING OUR SUCCESS

CANAL MAIN PROJECT

Nashuk LP is leading a \$350,000 realignment project on a 25 km logging corridor near Port Alberni, commissioned by the Ministry of Forests. This project is improving road safety and efficiency by flattening high grades, enhancing sightlines, and reinforcing roadbed stability.

Core work includes 1,400 meters of grade reduction, new culverts, cross drains, and precision blasting. Subcontractors include Coastal Bridge Construction, Ryder Contracting, and Van Con, with a Tseshaht crew boat providing oversight. The project began in February 2025 and is expected to conclude by mid-March, showcasing Nashuk's ability to deliver complex infrastructure work while supporting local employment.

CIVIL & EARTHWORKS

Nashuk LP is actively preparing to support multiple community-led development projects, including new housing subdivisions, utility installations, commercial and mixed-use spaces, and access improvements. These initiatives, led by Tseshaht First Nation, represent critical investments in health, safety, and economic diversification. Nashuk's civil and earthworks capacity is positioned to grow alongside these Nation priorities, ensuring that essential infrastructure is built with community benefit at the forefront.





NASHUK
LIMITED PARTNERSHIP

Looking Ahead

As Nashuk LP continues to grow, our focus remains on building long-term equity, expanding training and employment for Tseshaht members, and delivering infrastructure that strengthens the Nation's economic foundation. In the coming months, we will explore new opportunities in civil works and forestry while aligning every project with community values, environmental stewardship, and Nation-led decision-making.

Acknowledgements

We respectfully acknowledge the continued trust and collaboration of the Tseshaht First Nation, including Chief and Council, whose leadership guides our work. We also extend our thanks to our clients and partners for their confidence in our shared vision. Finally, we recognize our employees, whose dedication and skill form the foundation of Nashuk's success.

Contact

Head Office

732 Mt. Paul Way
Kamloops, B.C.
V2H 1B5

www.roga.ca

cheyenne.campbell@roga.ca
250-500-5069

steven.gillette@roga.ca
250-202-7141



ROGA
GROUP